

CESSNA AIRCRAFT COMPANY  
**MODEL 210 SERIES (1970 - 1976)**  
SERVICE MANUAL

**SUPPLEMENTAL INSPECTION NUMBER: 32-10-01**

1. **TITLE:**  
Main Landing Gear Retraction System Inspection

2. **EFFECTIVITY**  
668, 21059200 thru 21061573

**INSPECTION COMPLIANCE**

<b>ALL USAGE:</b>	<b>INITIAL</b>	3000 hours	or	10 Years <b>(NOTE)</b>
	<b>REPEAT</b>	500 hours	or	5 Years <b>(NOTE)</b>

**NOTE:** Refer to Note 1, Section 2A-14-00

3. **PURPOSE**  
To ensure integrity of main landing gear retraction system.

4. **INSPECTION INSTRUCTIONS**

- A. Check airplane records to verify that SEB01-2 has been accomplished. If not, complete SEB01-2 with this inspection.
- B. Remove seats and carpeting as required to gain access to the plate above the actuator.
- C. Inspect the actuator, actuator support assembly, and shaft for cracks and corrosion. Refer to Figure 1.
  - (1) Clean area before inspecting if grime or debris are present.
- D. Inspect the actuator pins, piston rack teeth, and sectors for cracks and wear.
- E. Install parts removed for access.

5. **ACCESS AND DETECTABLE CRACK SIZE**

**ACCESS/LOCATION/ZONE**

Main Gear Section

**DETECTABLE CRACK SIZE**

Not Allowed

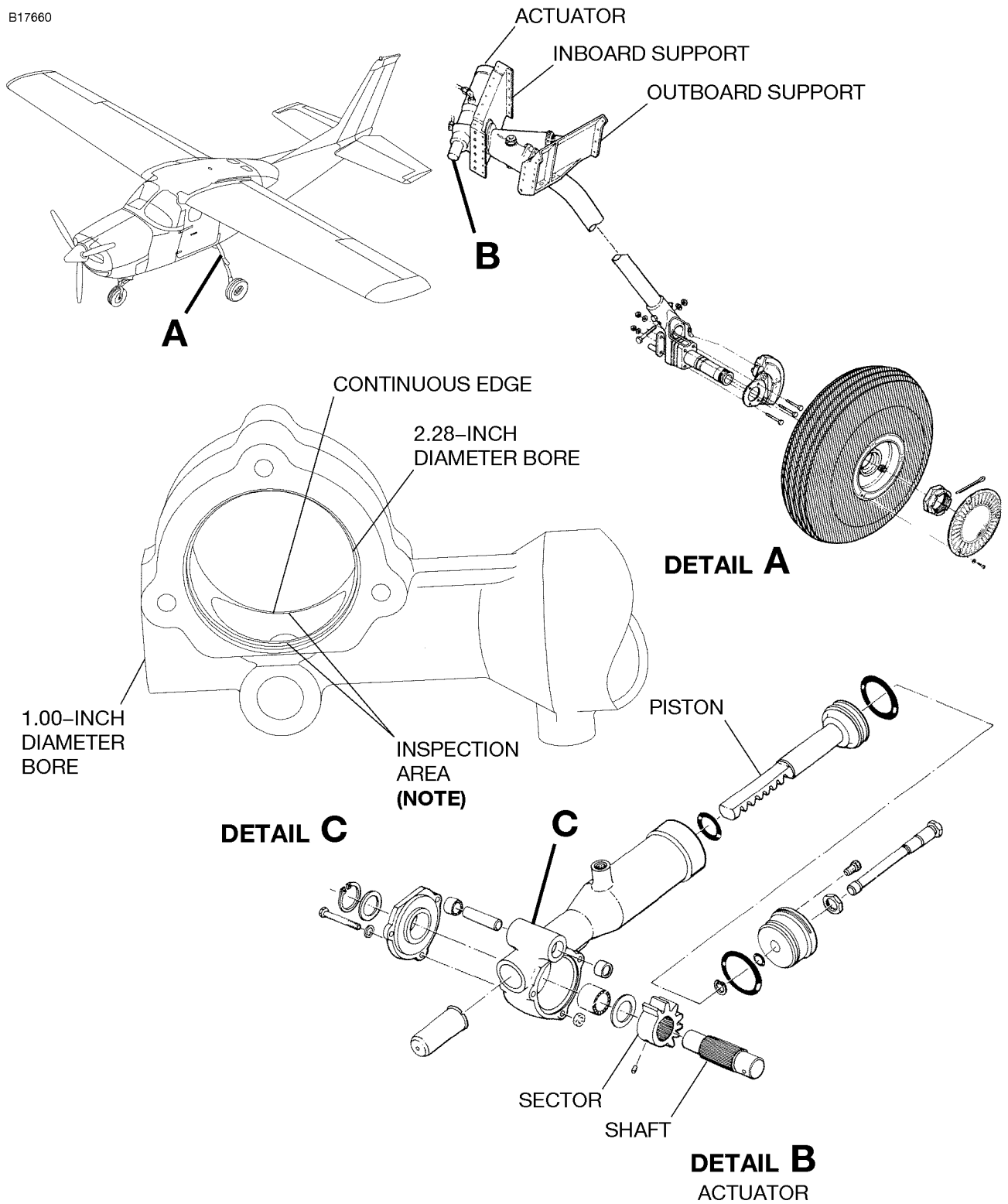
6. **INSPECTION METHOD**  
Visual

7. **REPAIR/MODIFICATION**  
A. Replace damaged parts.

8. **COMMENTS**

CESSNA AIRCRAFT COMPANY  
**MODEL 210 SERIES (1970 - 1976)**  
 SERVICE MANUAL

B17660



**NOTE:** INSPECT CONTINUOUS EDGE OF SADDLE-SHAPED HOLE AND CIRCUMFERENCE OF 2.28-INCH DIAMETER BORE AND STEP.

1210T1036  
 0541T1005

MAIN LANDING GEAR RETRACTION SYSTEM INSPECTION  
 Figure 1 (Sheet 1)